

HYBRID CONTROL PANELS



XSeries

EN 50131 / GRADE 2 / CLASS 2

The **X Series** are security control panels for building protection; hybrid system (wired and wireless input). EN 50131, Grade 2, Class 2 approved. The control panels have **audio support on board** and are equipped of 4/8 zones, expandable to 16/64. It is possible to obtain more zones by double and triple EOL split line (X412V - X824V).

X Series are able to notify one or more situations of ALARM, ROBBERY, TAMPERING and TROUBLE with different carriers:

- **PSTN LINE on board** (voice call, Contact ID, SIA fsk, etc.)
- **GPRS/4G module** (voice call, SMS, Contact ID, DC09 IP protocol for Contact ID and SIA IP)
- **IP / IP Wi-Fi module** (DC09 IP protocol for Contact ID and SIA IP)

The programming can be made with keypad and/or PC software. The programming with software can be made remotely with IP module and/or GPRS/4G module.

X412V



X824V



X864V



Clamps removable
(X824V - X864V)



- * PSTN on board
- * GPRS/4G module
- * IP / IP Wi-Fi module
- * BUS line (4 wires) RS485
- * CMS multiformat

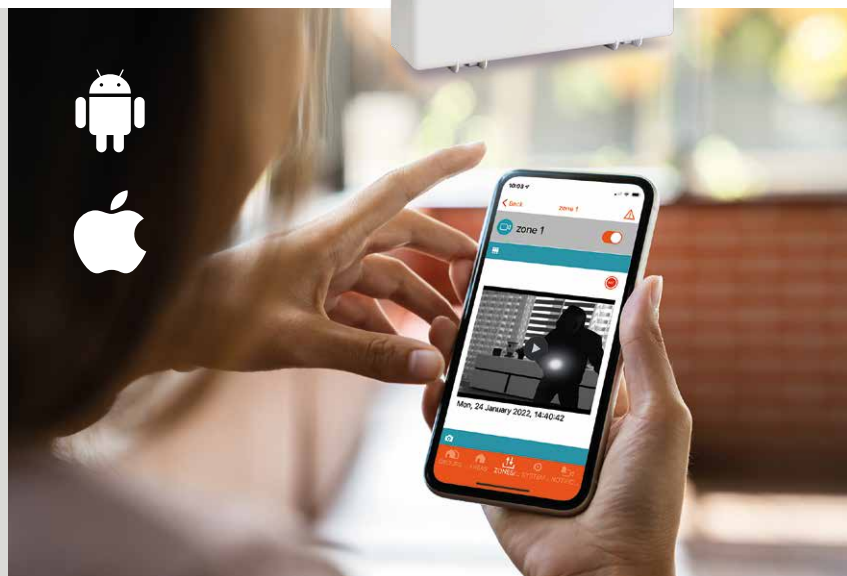
- * Audio support on board
- * Settable by PC
- * Manageable by App with IP module and/or GPRS/4G module



AMCPlus

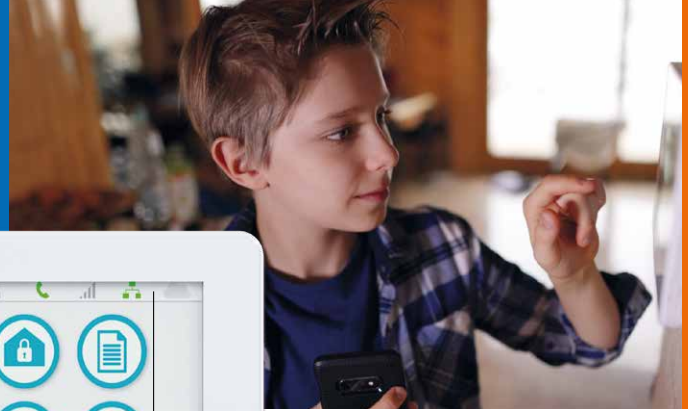


AMCPlus+
VIDEO VERIFICATION



Unika

touchscreen
keypad



Tag reader

Task Bar for all the system information

Vocal memo

Temperature

- * The X Series control panels are compatible with the all range of wired and wireless AMC accessories

K-Lcd Blue
Lcd keypad



K-Lcd Blue Tag
Lcd keypad with
RFID/NFC tag reader



K-Lcd Light
K-Lcd Light Plus
Compact Lcd keypad



X 412 V

X 824 V

X 864 V

	X 412 V	X 824 V	X 864 V
ZONES	4 - 12 zones split double, triple EOL + 2 zones for each keypad* (max 4 zones)	8 - 24 zones split double, triple EOL + 2 zones for each keypad* (max 8 zones)	8 - 64 zones double, triple EOL
WIRELESS ZONES	64 zones	64 zones	64 zones
OUTPUTS	5 on board - expandable to 8 (with expansions or keypads)	5 on board - expandable to 8 (with expansions or keypads)	5 on board - expandable to 17 (with expansions or keypads)
USER CODE	32	32	64
AREAS	4	4	8
GROUPS	4	4	4
KEYPADS	4	4	8
TAG READER	4	4	8
LOG EVENTS	1000	1000	1000
PHONE NUMBERS	8 for SMS / private calls + 8 for CMS	8 for SMS / private calls + 8 for CMS	8 for SMS / private calls + 8 for CMS
CARRIERS	PSTN on board, GPRS/4G module, LAN module, Wi-Fi module	PSTN on board, GPRS/4G module, LAN module, Wi-Fi module	PSTN on board, GPRS/4G module, LAN module, Wi-Fi module
REMOTE MANAGEMENT	by App (iOS - Android)	by App (iOS - Android)	by App (iOS - Android)
REMOTE PROGRAMMING	by PC software	by PC software	by PC software
MULTI-USER MANAGEMENT VIA APP	YES	YES	YES
VIDEO VERIFICATION	YES	YES	YES
TIMERS	4 per day week	4 per day week	8 per day week

* Keypads with zones are: Unika, K-Lcd Blue, K-Lcd Blue Tag, K-Lcd Light Plus

